



notes :

1. If this drawing has been received electronically it is the recipient's responsibility to print the document to the correct scale.
2. All dimensions are in millimetres unless stated otherwise. It is recommended that information is not scaled off this drawing.
3. This drawing should be read in conjunction with all other relevant drawings and specifications.
4. For planning application red line please see RPS drawing Figure 2.
5. Drawing shows proposed EoN vehicle movements only (not BM).

10m SCALE 1:500



	Proposed Development Boundary
	Proposed Landtake within Proposed Red Line Development Boundary 83581m2/8.3581Ha

KEY	
UEU	Structure for slag transport

Drawing for **PLANNING** purposes only

rev	amendments	by	ckd	date
A	Position of access to adjacent land amended.	SG	RS	20.09.10



Sherwood House  
 Sherwood Avenue  
 Newark, Nottinghamshire  
 NG24 1QQ

T +44 (0) 1636 605 700  
 F +44 (0) 1636 610 696  
 W [www.rpsgroup.com](http://www.rpsgroup.com)  
 E [rpsnewark@rpsgroup.com](mailto:rpsnewark@rpsgroup.com)

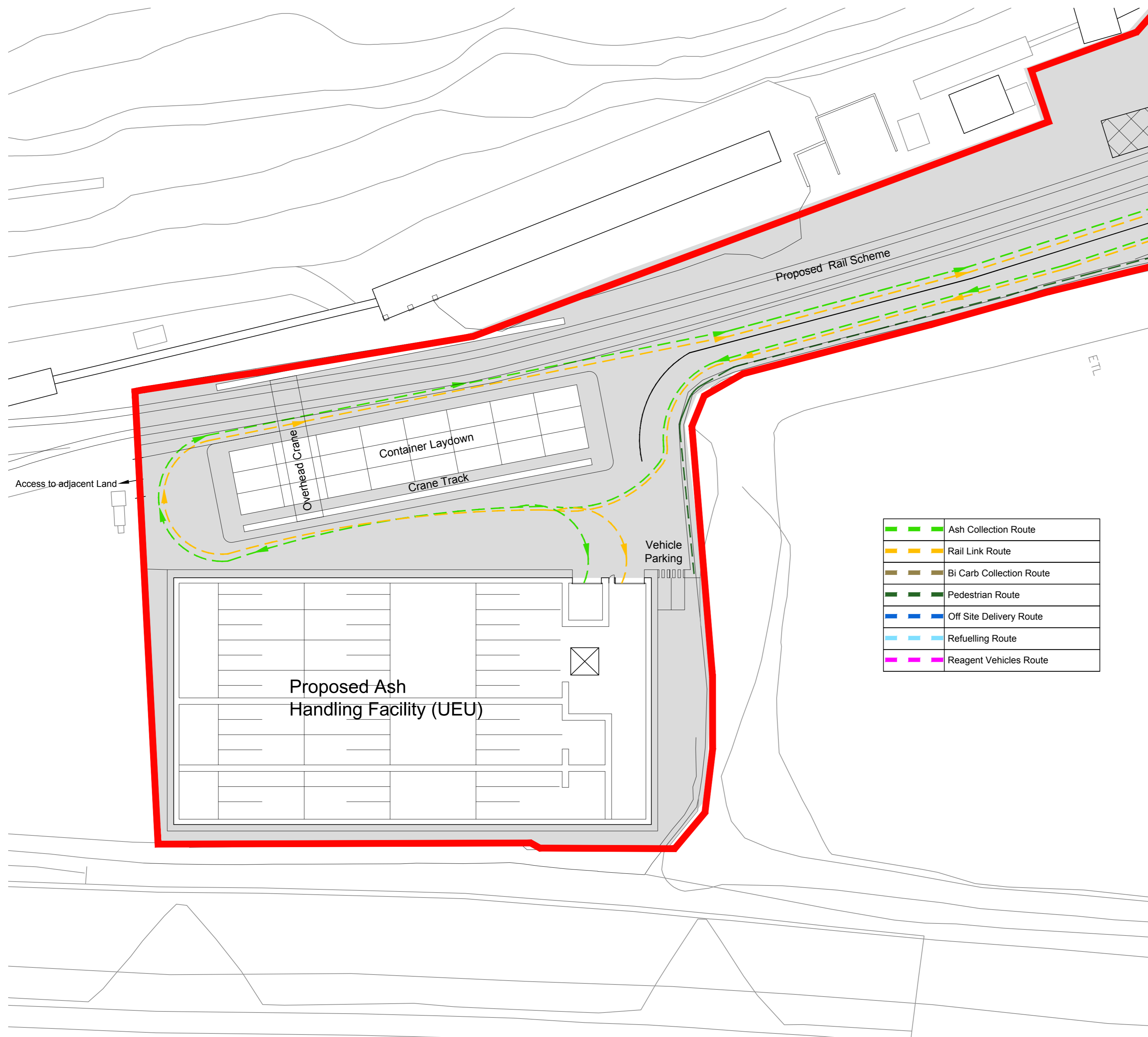









Project **Lostock Sustainable Energy Plant**

Title **Proposed Ash Handling Facility (UEU) Site Movements Layout**

Drawing Status	Date Created	Drawing Scale
Preliminary	15.09.10	1:500
Project Leader	Drawn By	Initial Review
RS	PRP	PRP

Drawing Number	Rev
16384 / A2 / P / 5103	A



	Ash Collection Route
	Rail Link Route
	Bi Carb Collection Route
	Pedestrian Route
	Off Site Delivery Route
	Refuelling Route
	Reagent Vehicles Route